

2RING®

CISCO
Partner
Select Developer

Cisco Webex
Contact Center

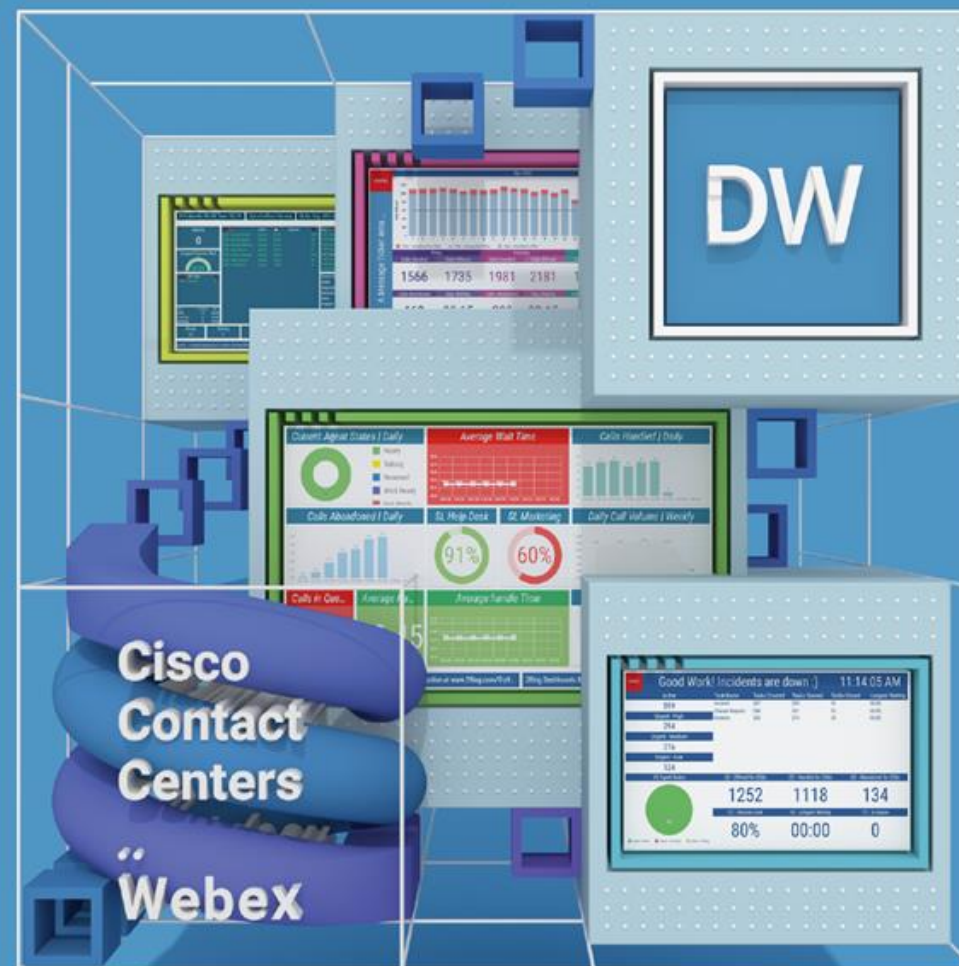
2Ring Dashboards & Wallboards ..

Proactive Real-Time (Intraday) Reporting for WxCC

Presented by: Brian Mazur (bmazur@2Ring.com)

Learn More: 2Ring.com/WXCC

Request Full Demo Access: 2Ring.com/DWWebexCCTrial





About 2Ring ..



- Founded in 2001
 - Over **20** years of experience in providing reliable add-ons to contact centers.
- Among **1000** of fastest growing companies in Europe in 2020
- Active customers in **60+** countries
- Currently **680** customers worldwide
- **100%** Indirect Sales Strategy
- Available via Cisco Global Price List

2RING®

CISCO
Partner
Select Developer

Cisco Webex
Contact Center

Sample Layouts are Available at:

www.2Ring.com/TryItWXCC and www.2Ring.com/TryItWXCCgrids



How 2Ring Enhances Webex CC ..

- **2Ring Dashboards & Wallboards**
 - Let business users make any layout truly their own, with full control over every segment and design element.
 - Create and Edit layouts, and Alerts without involving IT staff.

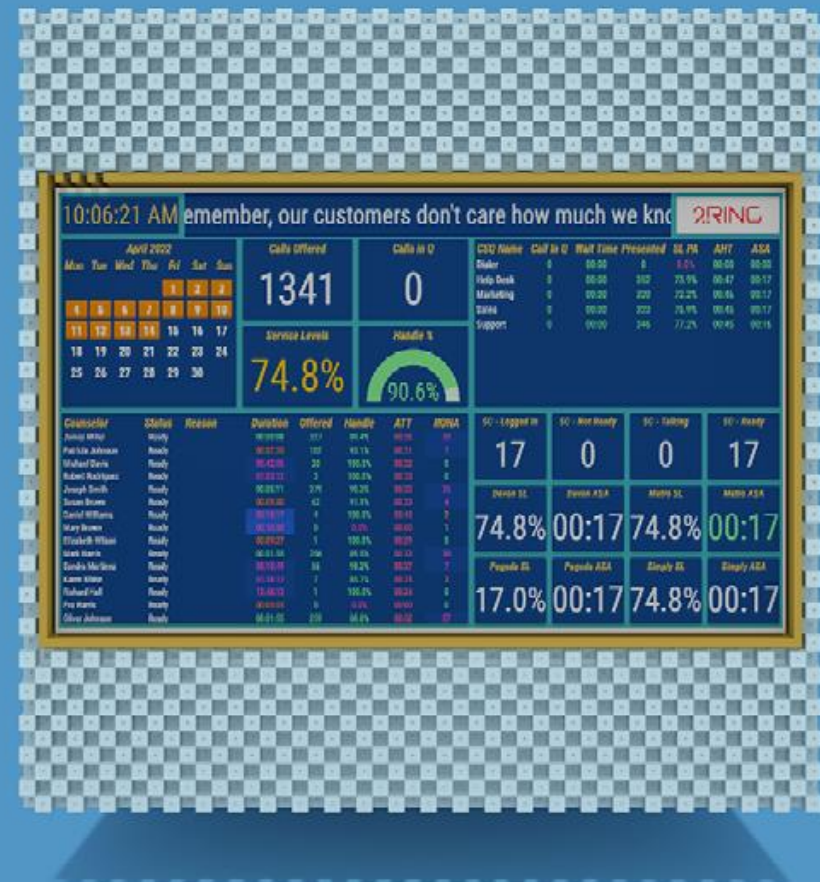




Your Content & Your Style ..

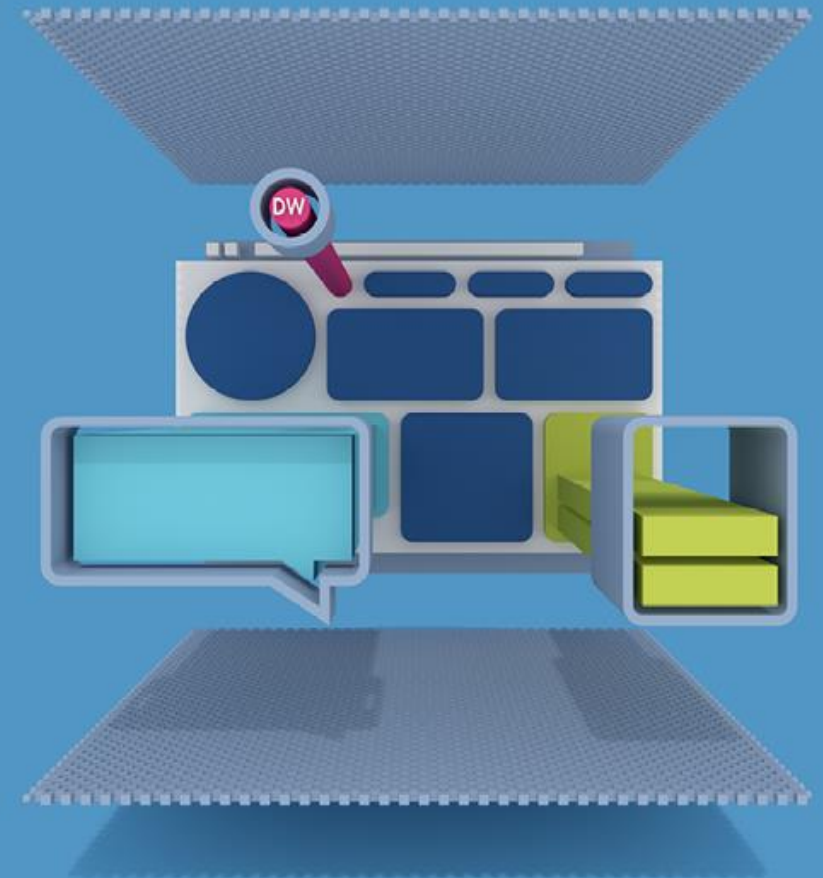


- Create layouts to your specific Enterprise 'design manual' and branding
- Create unique layouts for each specific BU, Dept., LOB, etc.
- Use a background image or settle on a solid color
- Drag & drop as many segments as needed, resize each to your liking
- Pick colors, font types, & sizes
- Filter, sort, and auto-page your grids
- Combine multiple values into a single row (merge multiple queues into a single row)
- Include scrolling banners/tickers/marquees
- Sequence segments or entire layouts



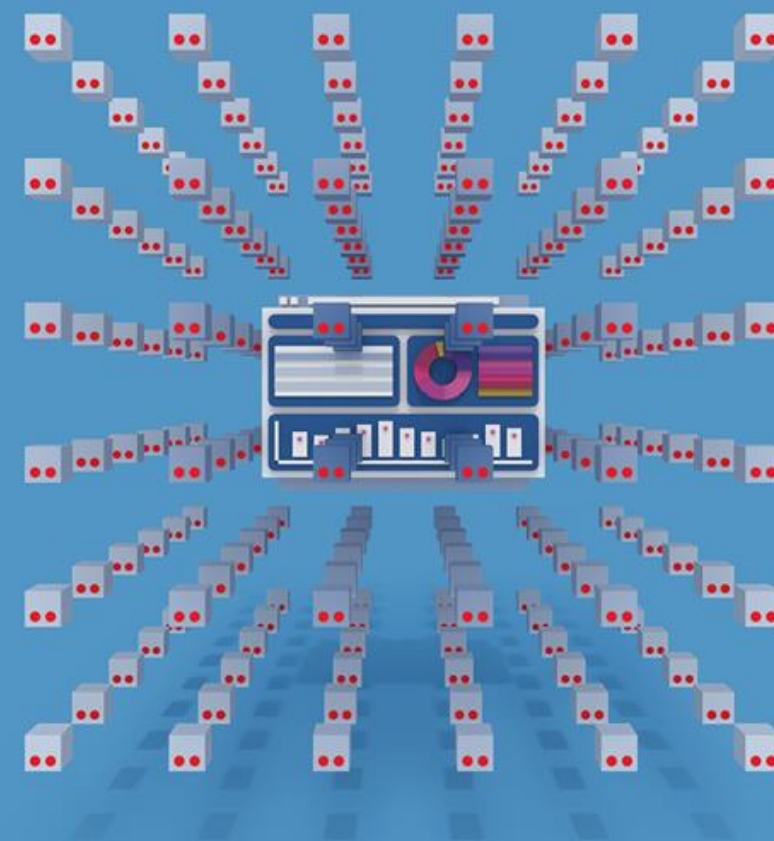
Real-Time Thresholds & Alerts ..

- Pick your metrics
- Define your thresholds
- Display alerts on your layout by
 - **Changing color**
 - **Blinking**
 - **Playing a sound / recording**
- Deliver alerts via email or to IM Clients (**Webex, Microsoft Teams, Discord, Slack, WhatsApp**), and/or via **SMS/texting*** (supports Webex Connect and more)



Business Units / Data Silos ..

- Split users among multiple BUs (layout or data silos), so everyone can only see and/or change their own boards
 - You can also assign **themes** for BUs, so all layouts within a given unit have a similar look and feel (default themes can be overridden by a BU's admin)
- Integrate 2Ring with Microsoft Azure AD for easy user management & access **control** (self-hosted only, but support in 2Ring Cloud is on its way)



External Sources & Content ..

Illustrate data from multiple sources and content types at once:

- Images
- Videos
- Web pages
- PPT / PDFs
- Display current time, weather, social media feeds, etc.

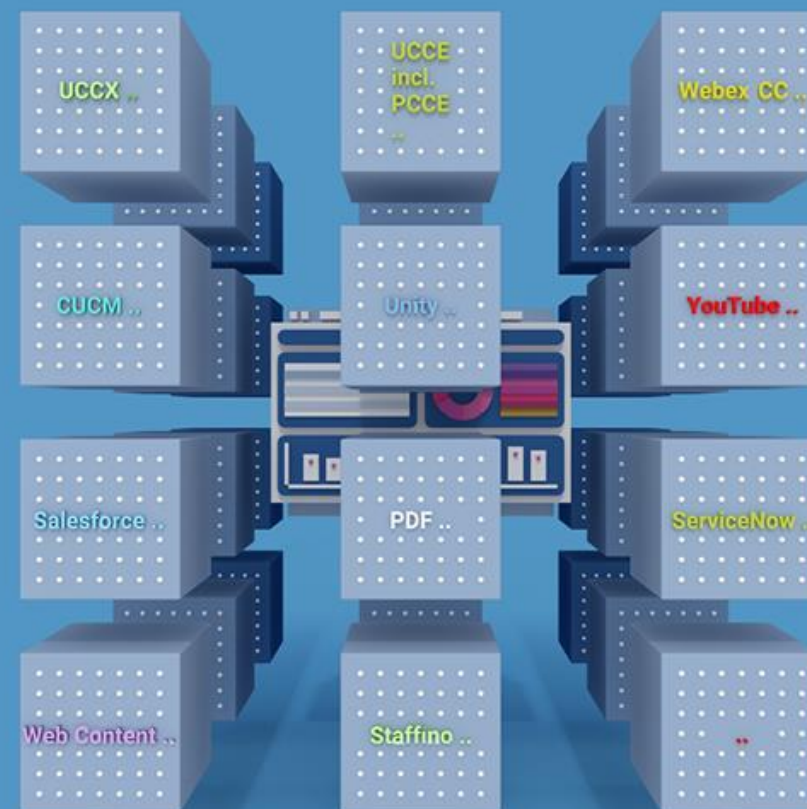


Multiple Data Sources at Once ..

Include additional business relevant information from:

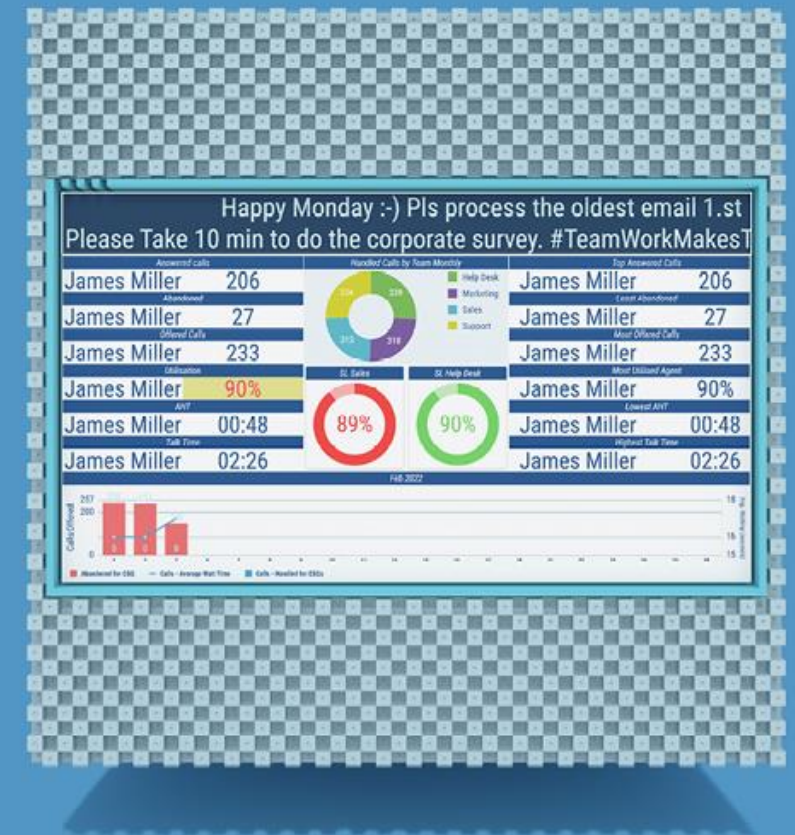
- **ServiceNow**
- **Salesforce**
- **SQL**

Build a special layout for each department – e.g. service desk:
www.2Ring.com/TryItServiceNow



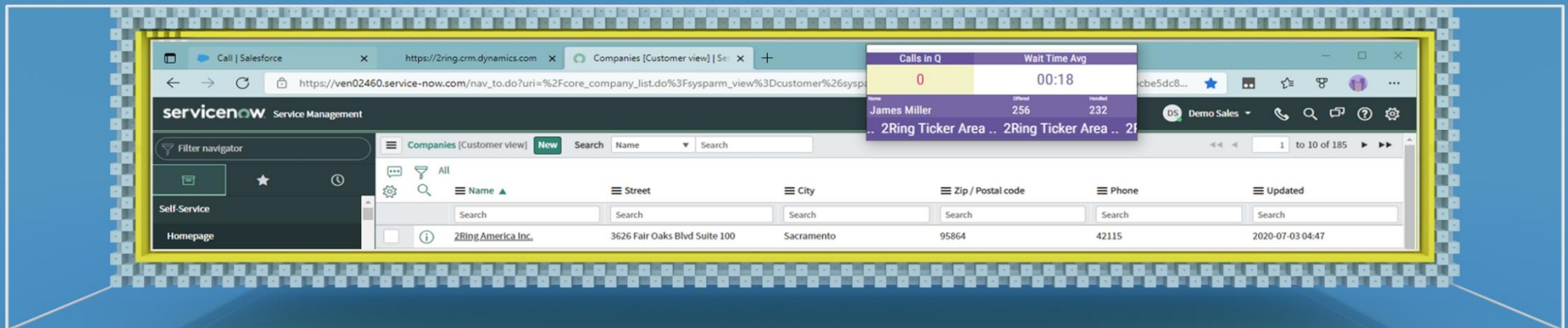
Broadcast Messages to a Scrolling Text Marquee ..

- Send instant messages to a single board or to multiple boards at once
- Display messages permanently or for
 - X number of minutes, or
 - A pre-defined date/time



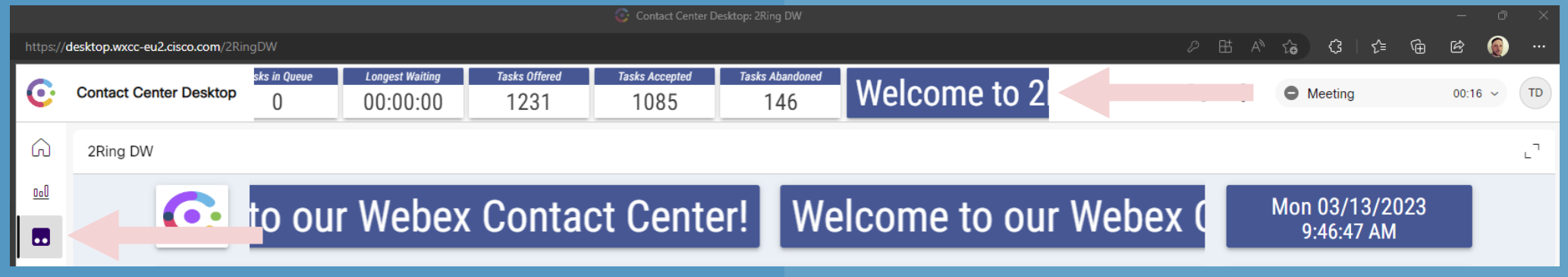
2Ring Power Tool (Personalized Wallboard) ..

- **Personalized grids** – create one layout and every agent sees his/her metrics only
- **Flexible window size** with embedded layout **auto-resizing to the space provided**
- **Metrics can change colors and blink based on thresholds**
- Ability to be always visible **on top of all other windows**
- **Remembers** its position on the screen and its own window size
- Can be set to **auto-launch** once agent logs in to her/his workstation
- Can contain a team-based **message ticker** – scrolling marquee



2Ring Layouts Inside of WxCC Desktop

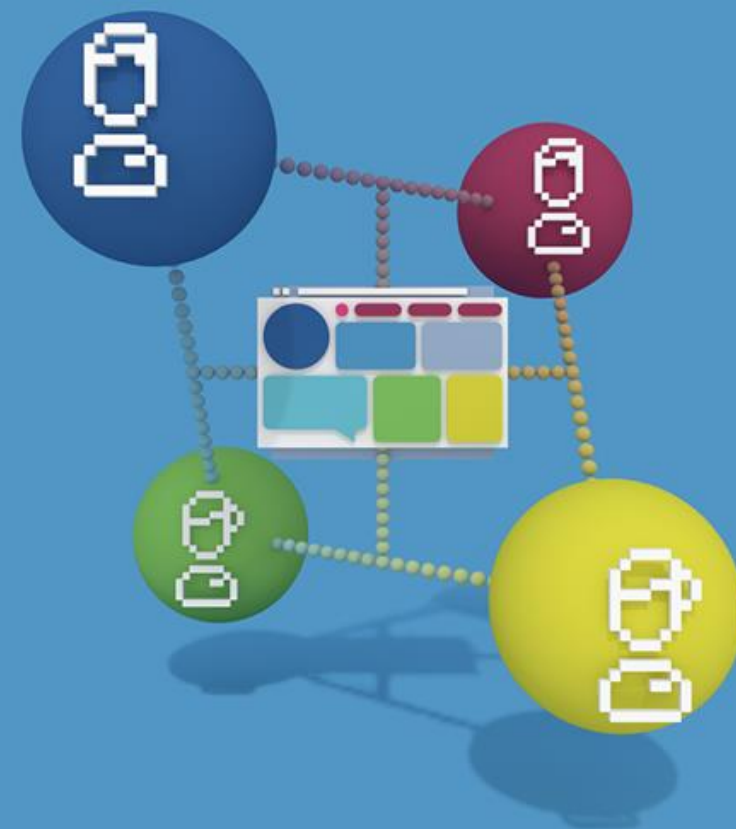
- A Dedicated Tab
 - Audible and IM alerts (e.g. about calls in queue being over a threshold for more than 3 minutes) can still be active even if agent is not actively looking at this dedicated tab
- Part of Desktop's Header
 - A scrolling or a static ticker with the most important KPIs or a marquee
 - 2Ring Layouts can run inside of an iFrame and thus those can be easily embedded into other web-based applications



2Ring Part of Cisco dCloud

(CCO/partner login required)

- Instant demo of **2Ring for WxCC** is part of **Cisco dCloud**:
 - <https://dcloud2-lon.cisco.com/content/instantdemo/cisco-webex-contact-center-wxcc-v8-instant-demo?returnPathTitleKey=content-view>
 - Select “**2Ring Dashboards & Wallboards v1**” under “**Instant Demos**”
- To reference the accompanying **demo script & resources**:
 - https://dcloud-docs.cisco.com/c/r/dcloud-docs/sites/en_us/collaboration/out_wxcc_v8/b_webex_contact_center_v8.html?dc=rtp



2RING



Cisco Webex
Contact Center



2Ring .. Americas

ADDRESS

3626 Fair Oaks Blvd. Suite 100
Sacramento, CA, 95864, USA

PHONE

+1 (916) 426-3790

EMAIL

Info-na@2Ring.com

WWW

www.2Ring.com

Brian Mazur

Director of Channel Sales
+1 (603) 305-4128

bmazur@2Ring.com

2Ring .. EMEA

ADDRESS

Plynarenska 7/B
821 09, Bratislava, Slovak Republic

PHONE

+421 (2) 5822-4550

EMAIL

info@2Ring.com

WWW

www.2Ring.com

Peter Kolenič

Channel Director, EMEAR
+421 (2) 5822 4379
+421 (903) 500 494

pkolenic@2Ring.com

2Ring .. APAC

MOBILE

Michal Grebáč

Strategic Sales & Marketing Director

EMAIL

+1 (916) 514-3355

mgrebac@2Ring.com

2Ring .. Links to Remember

[DW Product Site](#)

[Request Instant Access to DW \(Cloud\)](#)

[Request a Live Demo](#)

[View a Sample Wallboard Layout](#)

[2Ring.com/WXCC ..](http://2Ring.com/WXCC..)

[2Ring.com/DWWebexCCTrial ..](http://2Ring.com/DWWebexCCTrial..)

[2Ring.com/WebEx ..](http://2Ring.com/WebEx..)

[2Ring.com/TryItWXCC ..](http://2Ring.com/TryItWXCC..)